

## PAPI (PRECISION APPROACH PATH INDICATOR)

### COMPLIANCES

ICAO: Annex 14, Vol. 1, para. 5.3.5.23 to 5.3.5.45 IEC: EN 61827  
FAA: L-880 & L-881 AC 150/5345-28  
NATO: STANAG 3316

### APPLICATIONS

The PAPI system provides the pilot a positive visual indication of the aircraft position in respect to the optimal glide slope during the final approach to the runway.

An airport PAPI system generally consists of four units in a line or bar, preferably located on the left side of the runway; each unit is equipped with two lamps (ICAO Annex 14) or three lamps (ICAO Aerodrome Design Manual - NATO STANAG).

If required, a second bar can be symmetrically installed on the other side of the runway.

Each PAPI unit produces a beam of light, the upper portion being white, the lower red, with a sharp transition. When a pilot is flying close to the nominal approach slope, the two units closer to the runway appear red and the two outers appear white; if the pilot follows greater angles the number of white units increases, while for lower angles the number of red units increases.



### BENEFITS

- 1500 hours lamp rated life at full intensity, but over 3000 hours in field operating conditions
- All the units are identical each to other and are properly setted on site according to the specific slope angle
- Simple and quick installation

### PERFORMANCES

- Body consisting of an aluminium sheet box with a front panel for lenses and two inner panels for filters and reflectors
- Four supporting columns for maximum stability, each including an aluminium leg with breakable groove, to assure the frangibility of the unit in case of impact, and an upper stainless-steel threaded rod, to allow the precise adjustment ( $\pm 30$  mm) in elevation and the fine levelling of the box. The legs are available of different lengths to compensate ground gradients
- Aluminium top cover, removable, locked to the body by means of two padlock able fasteners
- One cable lead for each lamp
- Optional protective front glass
- On request, each cable lead can be supplied complete with a galvanized steel flexible pipe, PVC sheathed, for mechanical protection
- Protection degree: IP44
- Temperature range:  $-55^{\circ}\text{C}$  to  $+55^{\circ}\text{C}$

### INSTALLATION

- On concrete platform by means of threaded anchors or floor flanges: a positioning jig can be supplied for their precise installation
- A linear level and a clinometer are available for precise unit levelling and aiming respective



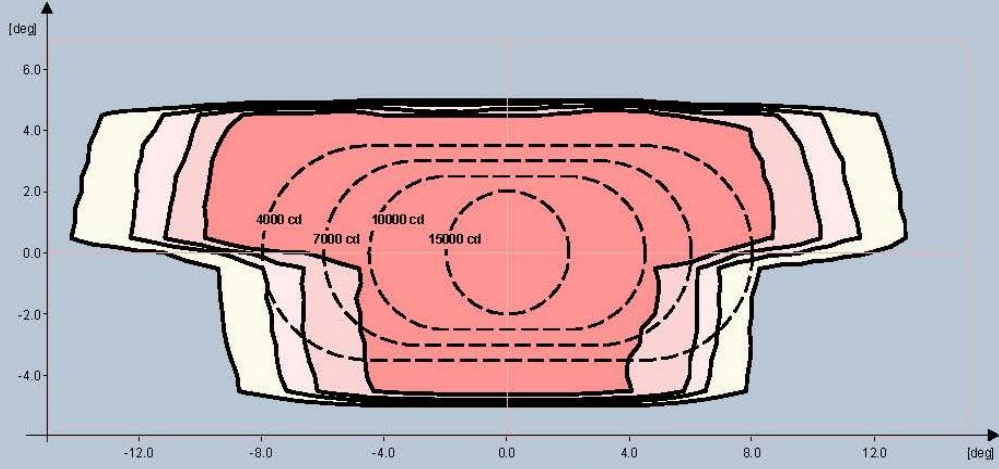


Fig. 1 OACI A2-23 – White/Red

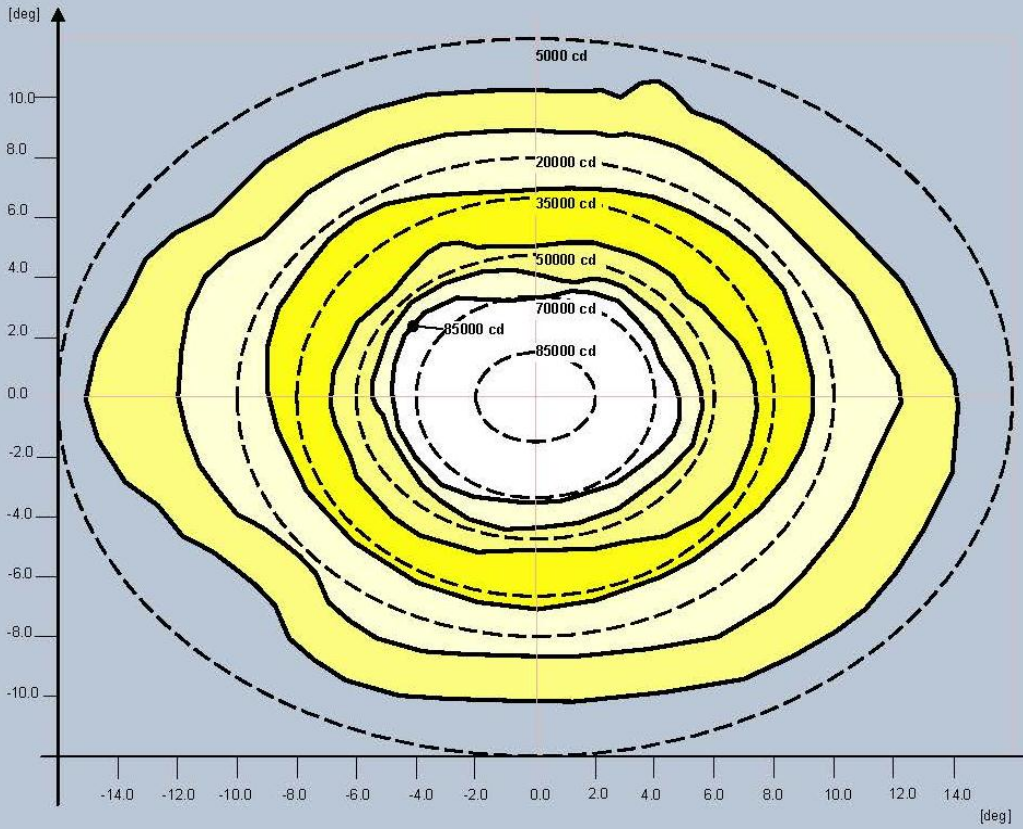
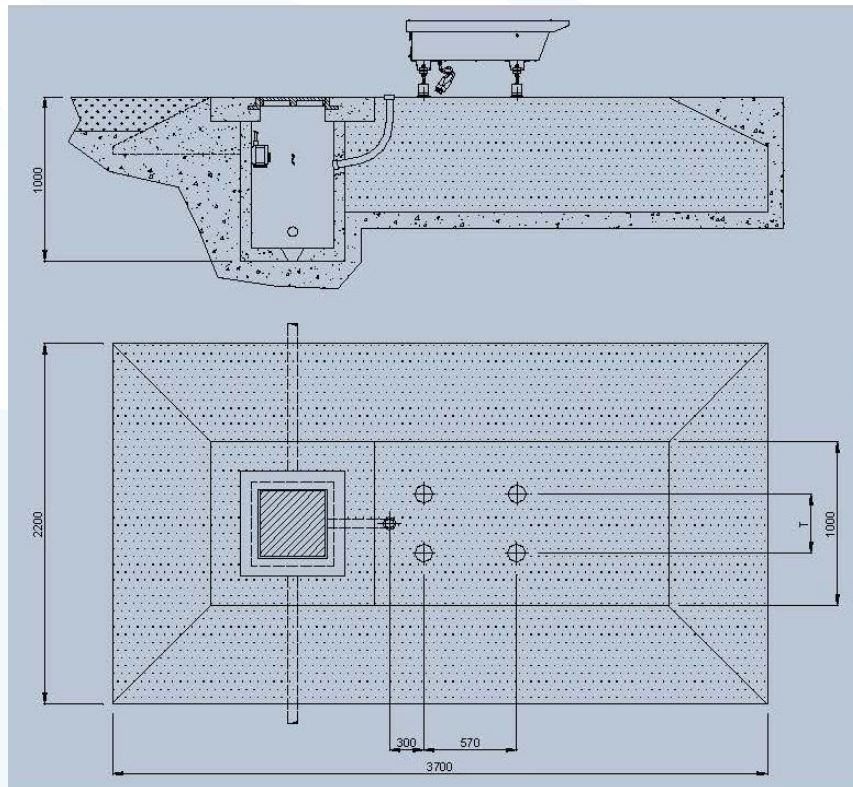
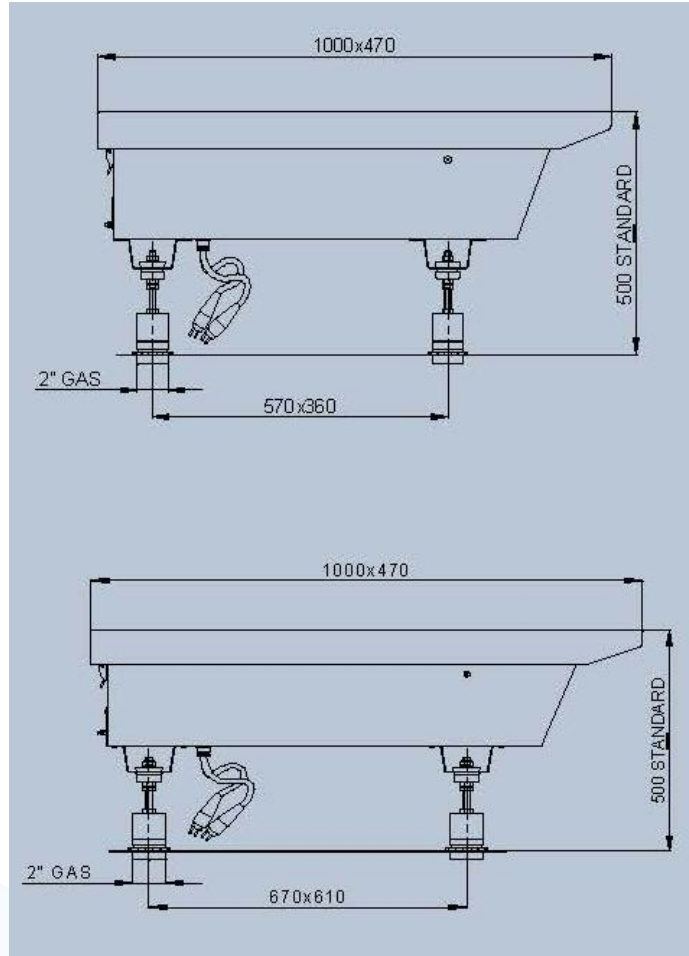
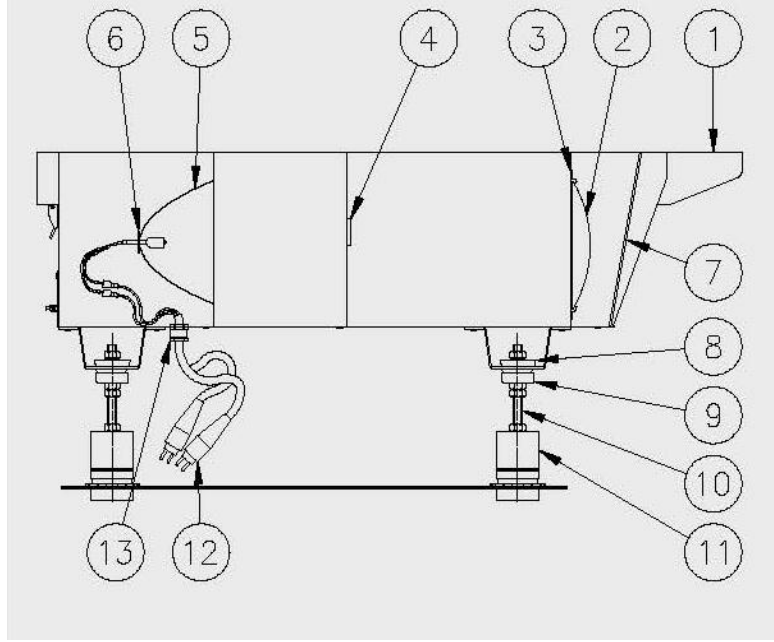


Fig. 2 NATO A1 – White







### **RENEWAL PARTS FOR LIGHT UNIT**

- 1 Top cover
- 2 Optical glass front lens
- 3 Lens ring
- 4 Tempered glass red filter
- 5 Reflector with lampholding plate
- 6 Lamp
- 7 Front glass
- 8 Spherical counterjoint for supporting column
- 9 Spherical joint for supporting column
- 10 Threaded rod
- 11 Leg with breakable groove
- 12 Cable lead with plug
- 13 Cable gland

**Refer to the relevant technical manual for the complete list of the available spare parts**

