



TEKSAV TEKNOLOJİ

DEEP BASES L-867

APPLICATIONS

FAA TYPES

L-867 Base for applications subject to occasional light vehicular loading but no Aircraft or other heavy Vehicular loading



TEK.255.M.03

FEATURES

FAA CLASSES

Class IA - Metallic Bases - Galvanized Steel
Class IB - Metallic Bases Corrosion Resistant
Stainless Steel (CRESS)

FAA SIZES

B - 12 inch L-867
D - 16 inch L-867
E - 24 inch L-867

Type L-867 is used as a mounting base for elevated or in-pavement airport light fixtures, as a housing for series circuit transformers, and as an electrical junction box. It is designed to light vehicular loading but non aircraft or other heavy vehicular. The design must allow the installation of any in-pavement fixture.

Type L-867 is also available in stainless steel. The length of the base may vary to meet specific conditions. Standard height is 21" (610mm).

The location, number, and size of conduit entrances shall be considered standard at 180°, but it may vary to meet specific conditions.

COMPLIANCES

brosure yazdım

FAA AC 150/5345-42

FAA AC 150/5340-30 (INSTALLATION)

FAA AC 150/5345-46 (LIGHT FIXTURE)



TEKSAV TEKNOLOJİ ELEKTRİK
ELEKTRONİK MAKİNA SAN. ve TİC. A.Ş.
10001 Sk. No:54/A Ulukent San. Böl.
Menemen-İZMİR/TÜRKİYE(İZMİR/TURKEY)



+90 232 328 11 41 (Pbx)



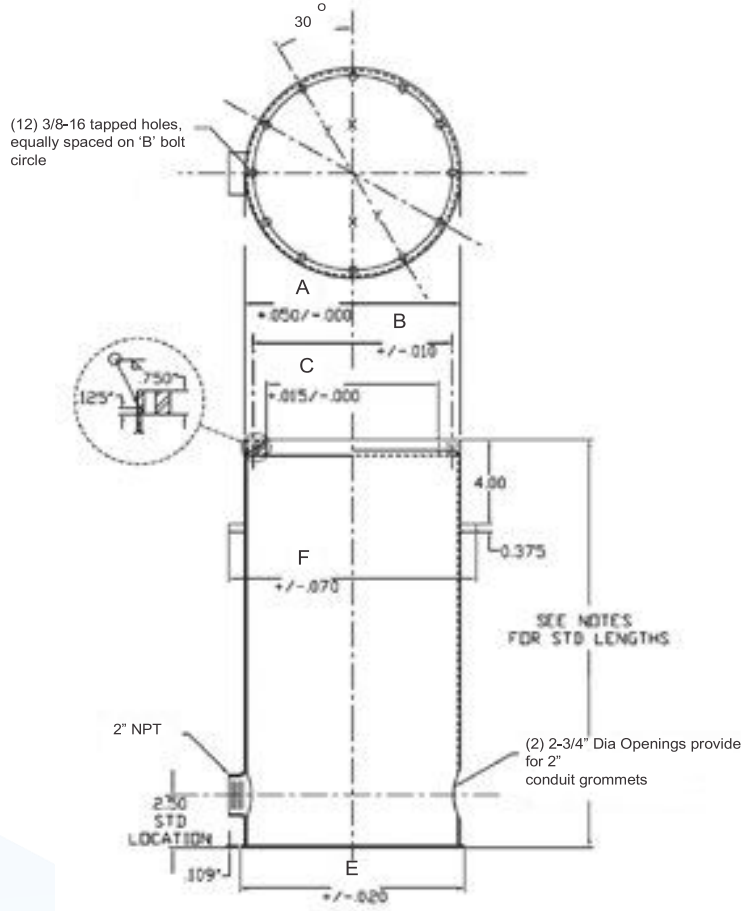
+90 232 328 11 47



www.teksav-teknoloji.com



info@teksav-teknoloji.com



DIMENSIONS L-867

Nom. Dia. INCH	"A"	"B"	"C"	"D"
12.0	13.500	10.250	12.250	9.250
16.0	17.375	14.250	16.250	12.375
24.0	24.000	21.500	22.500	20.000
Centimeters				
Nom. Dia.	"A"	"B"	"C"	"D"
30.5	34.290	26.035	31.115	23.495
40.6	44.133	36.195	41.275	31.433
61.0	60.960	54.610	57.150	50.800